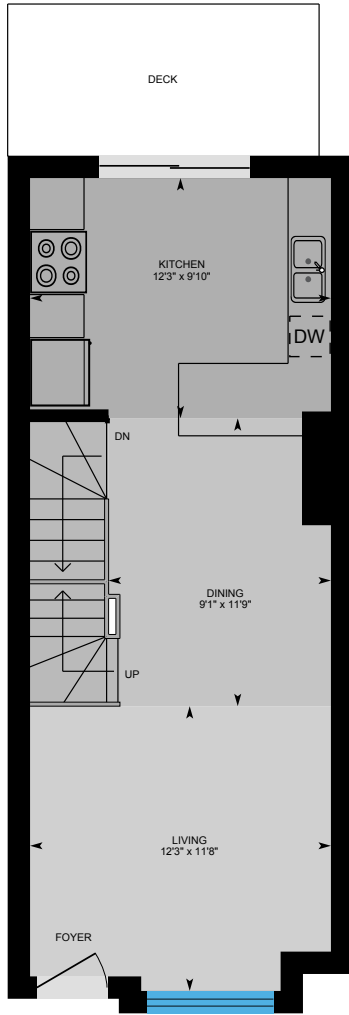
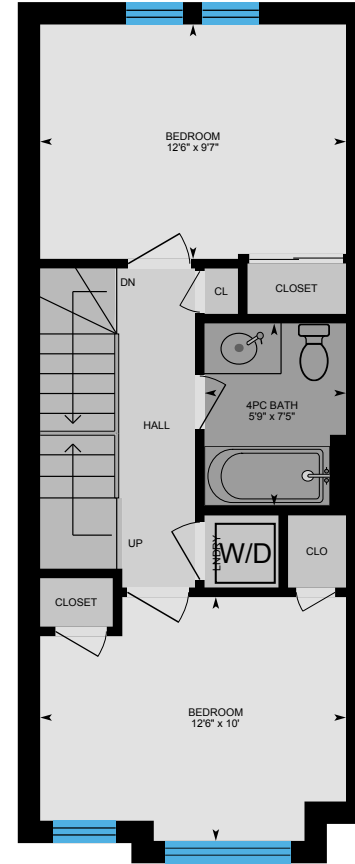


TH 63-113 The Queensway, Toronto, ON

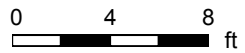
Main Building



1st Floor



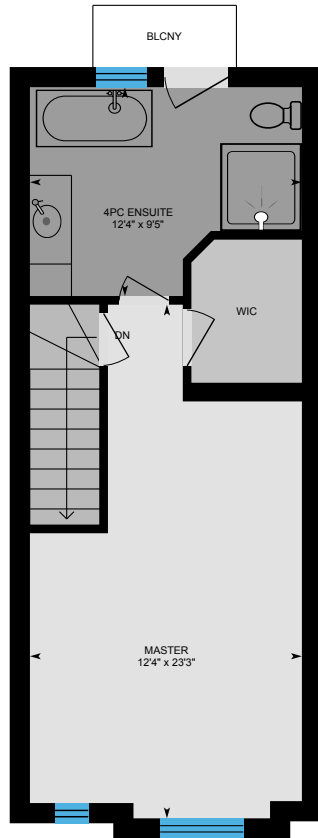
2nd Floor



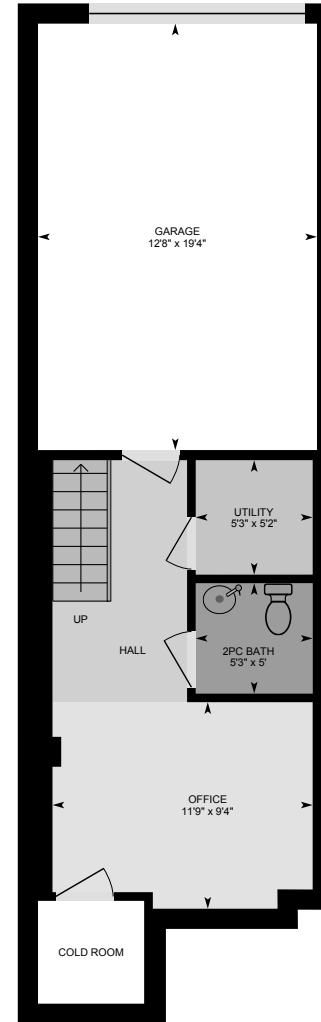
PREPARED: Jul, 2019

TH 63-113 The Queensway, Toronto, ON

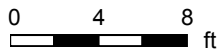
Main Building



3rd Floor

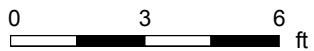
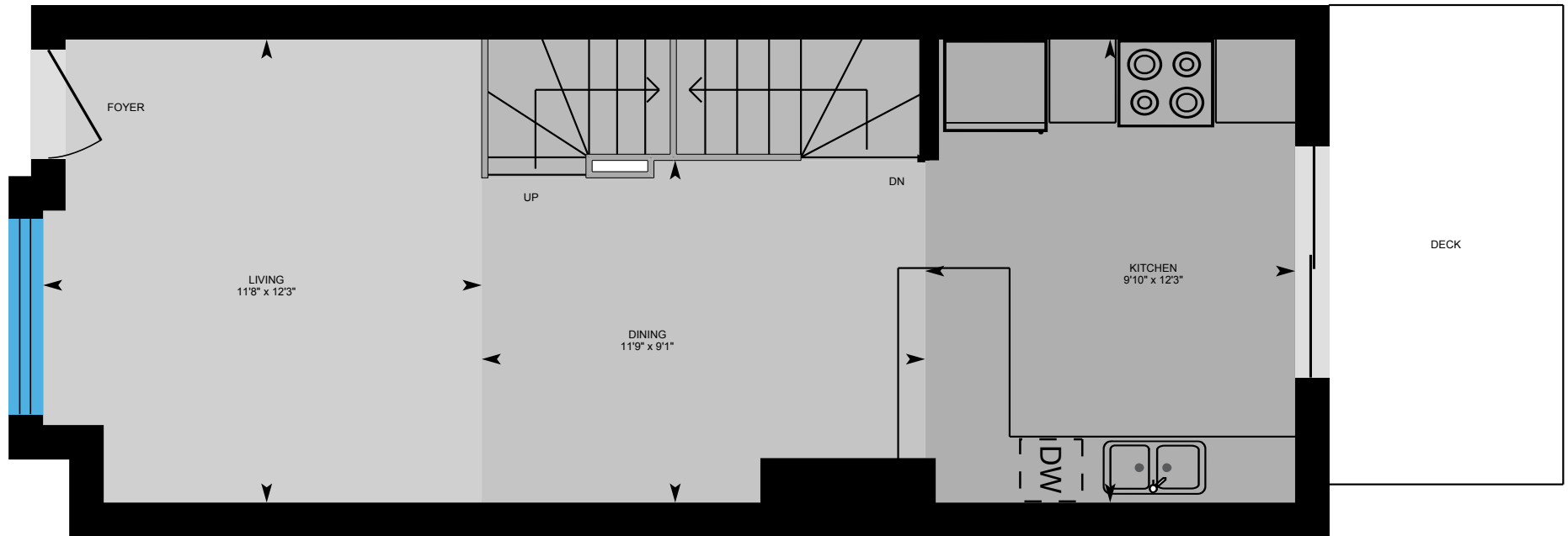


Basement

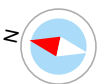


TH 63-113 The Queensway, Toronto, ON

1st Floor



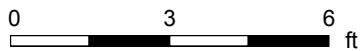
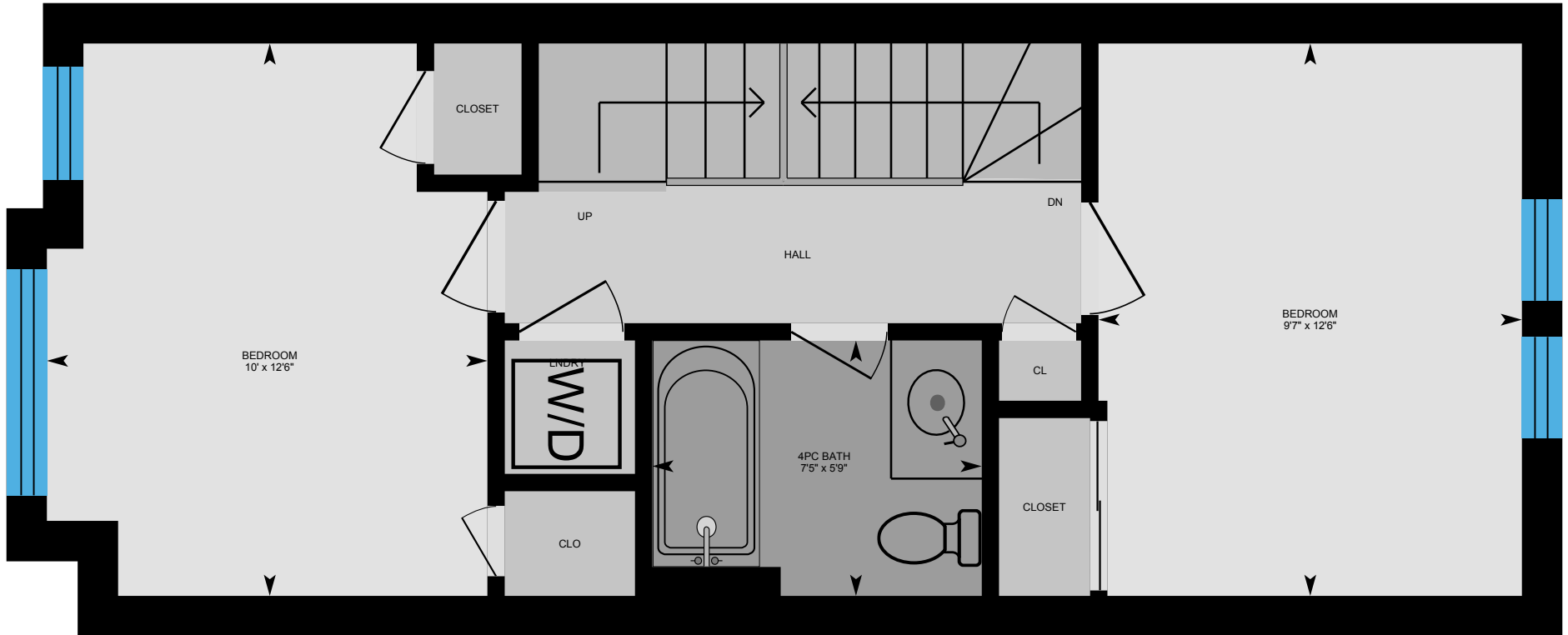
PREPARED: Jul, 2019



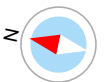
White regions are excluded from total floor area. All room dimensions and floor areas must be considered approximate and are subject to independent verification. For method of measurement please see <https://youriguide.com/measure/>.

TH 63-113 The Queensway, Toronto, ON

2nd Floor



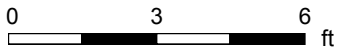
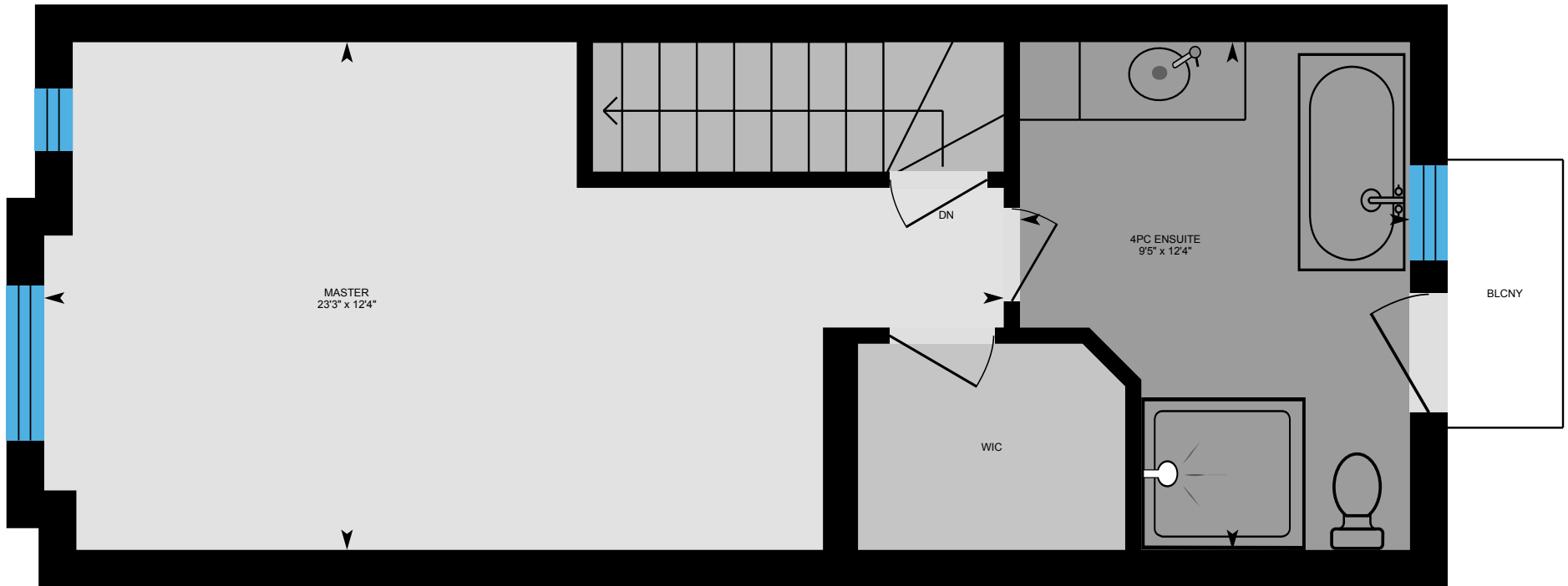
PREPARED: Jul, 2019



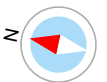
White regions are excluded from total floor area. All room dimensions and floor areas must be considered approximate and are subject to independent verification. For method of measurement please see <https://youriguide.com/measure/>.

TH 63-113 The Queensway, Toronto, ON

3rd Floor



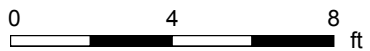
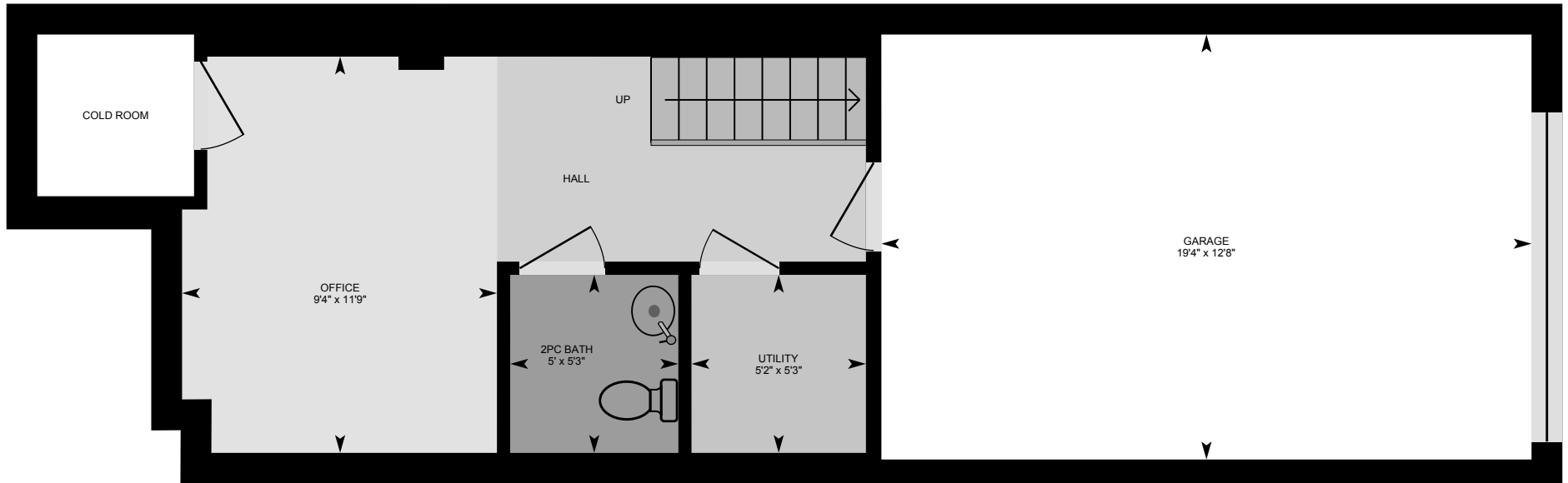
PREPARED: Jul, 2019



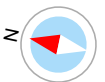
White regions are excluded from total floor area. All room dimensions and floor areas must be considered approximate and are subject to independent verification. For method of measurement please see <https://youriguide.com/measure/>.

TH 63-113 The Queensway, Toronto, ON

Basement



PREPARED: Jul, 2019



White regions are excluded from total floor area. All room dimensions and floor areas must be considered approximate and are subject to independent verification. For method of measurement please see <https://youriguide.com/measure/>.

TH 63-113 The Queensway, Toronto, ON

Property Details

Room Measurements

Only major rooms are listed. Some listed rooms may be excluded from total interior floor area (e.g. garage). Room dimensions are largest length and width; parts of room may be smaller. Room area is not always equal to product of length and width.

Main Building

1ST FLOOR

Dining: 9'1" x 11'9"

Kitchen: 12'3" x 9'10"

Living: 12'3" x 11'8"

2ND FLOOR

4pc Bath: 5'9" x 7'5"

Bedroom: 12'6" x 10'

Bedroom: 12'6" x 9'7"

3RD FLOOR

4pc Ensuite: 12'4" x 9'5"

Master: 12'4" x 23'3"

BASEMENT

2pc Bath: 5'3" x 5'

Garage: 12'8" x 19'4"

Office: 11'9" x 9'4"

Utility: 5'3" x 5'2"